



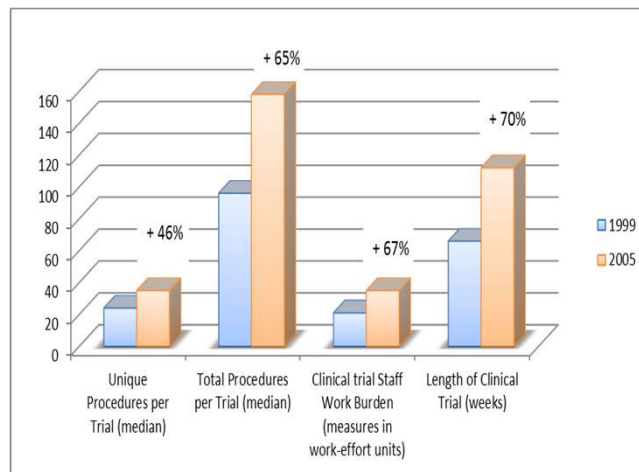
Connected Hospital Platforms, enabling secondary use e-HR  
4<sup>th</sup> National Clinical Trial Day - PRAGUE

Àngels García Arellano – Clinical Study Unit - Spain

# Medical Innovation

## Change in paradigm

### THE GROWING COMPLEXITY OF CLINICAL TRIALS



Source: PhRMA Report 2010

## Health digitalisation offers new opportunities

Data directly obtained from patients and from the point of observation.

- **Electronic Medical and Health Records.**
- Wearable Devices /Connected Devices/ Electronic PRO/Study Apps / Portal.

Provide a platform for trustworthy re-use of EHR data to support innovation in clinical research and healthcare operations: access to RWD to optimize CT.

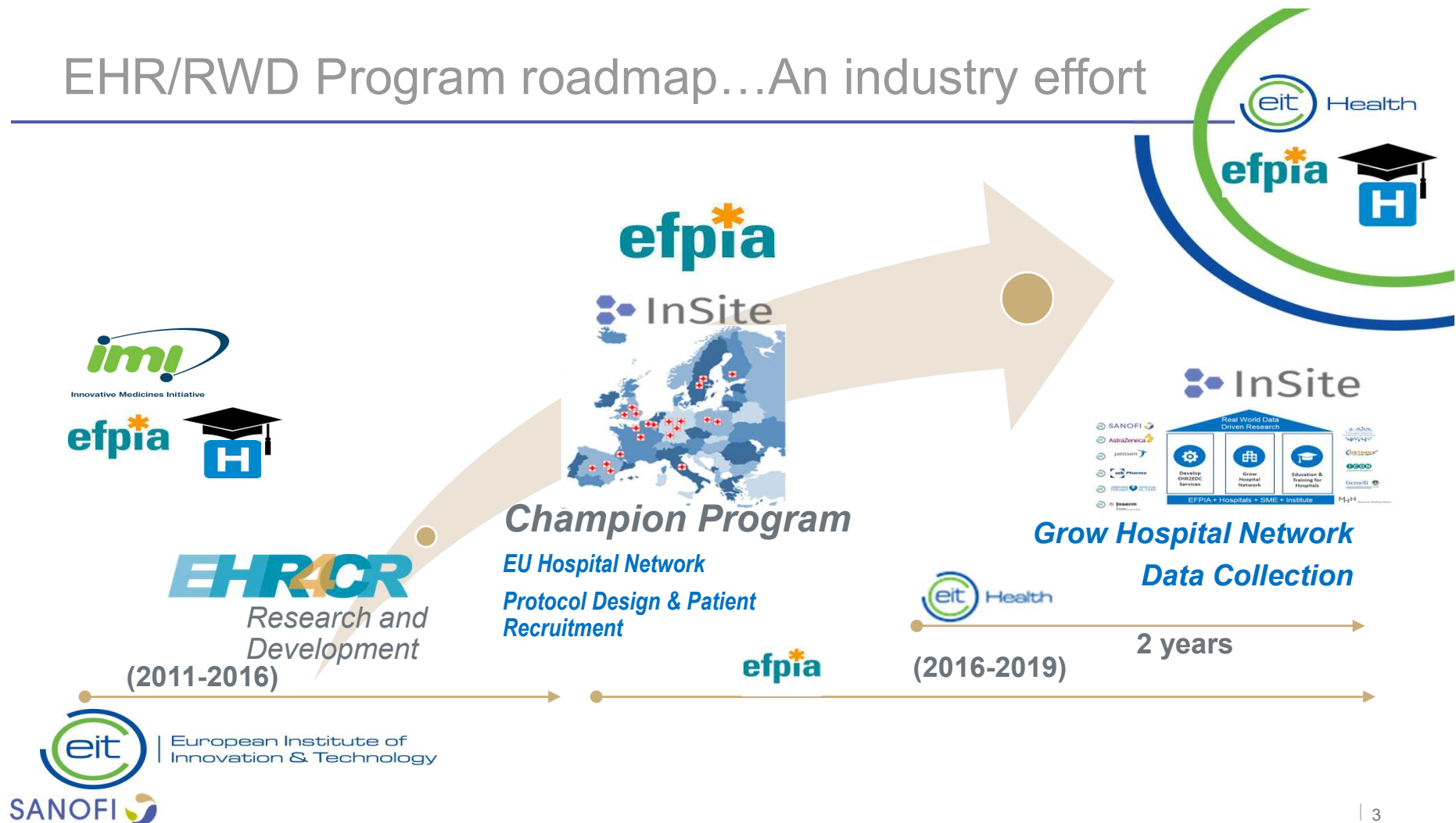
predict the number of eligible patients for a candidate clinical trial protocol

assess its feasibility and to locate the most relevant hospital sites

identify patients who may be eligible for particular clinical trials

**EHR4CR**

# EHR/RWD Program roadmap...An industry effort

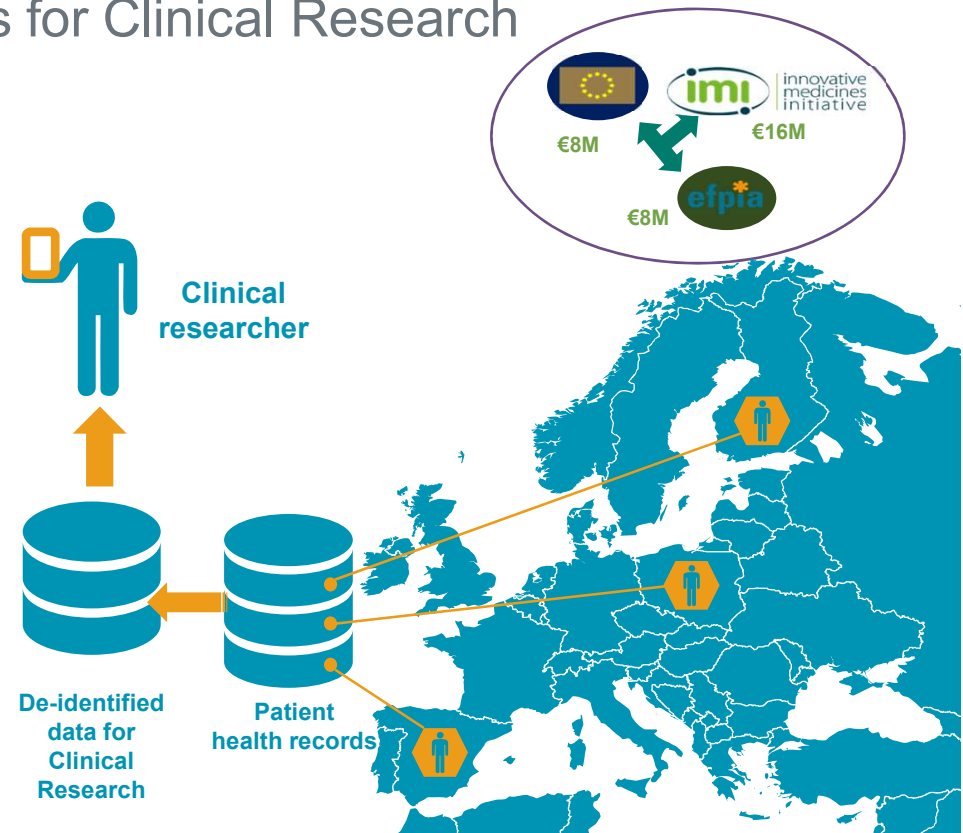


# IMI EHR4CR Project

## EHR4CR – Electronic Health Records for Clinical Research

4+1 year project (2011-2016), 35 partners, budget >16M€

- Bringing together multiple stakeholders
- Overcoming barriers that limit access to EHRs for research
- Developing a platform and services for trustworthy re-use of EHR data within and outside Europe



# The Consortium; a Mix of Academic & Pharma



- **EHR4CR Platform** - Interoperable system connected to several hospitals
- **Champion Program**- Using the RWD platform in real life and validating the Business model
- **The European Institute for Innovation Through Health Data (i-HD)**: An institute to regulate and manage the ecosystem

# What were the challenges addressed

Key challenges to overcome in integrating EHR and CR



**Complying with ethical, legal and privacy requirements that differ from country**

*Accreditations*



**Provide a platform that enables access to many, different EHR systems**

*Standards, Specifications,*



**Ensuring the correctness, completeness and accuracy of the data (quality assurance)**

*Certification*



**Sustainability within a scalable business model**

*Innovative Business Model*

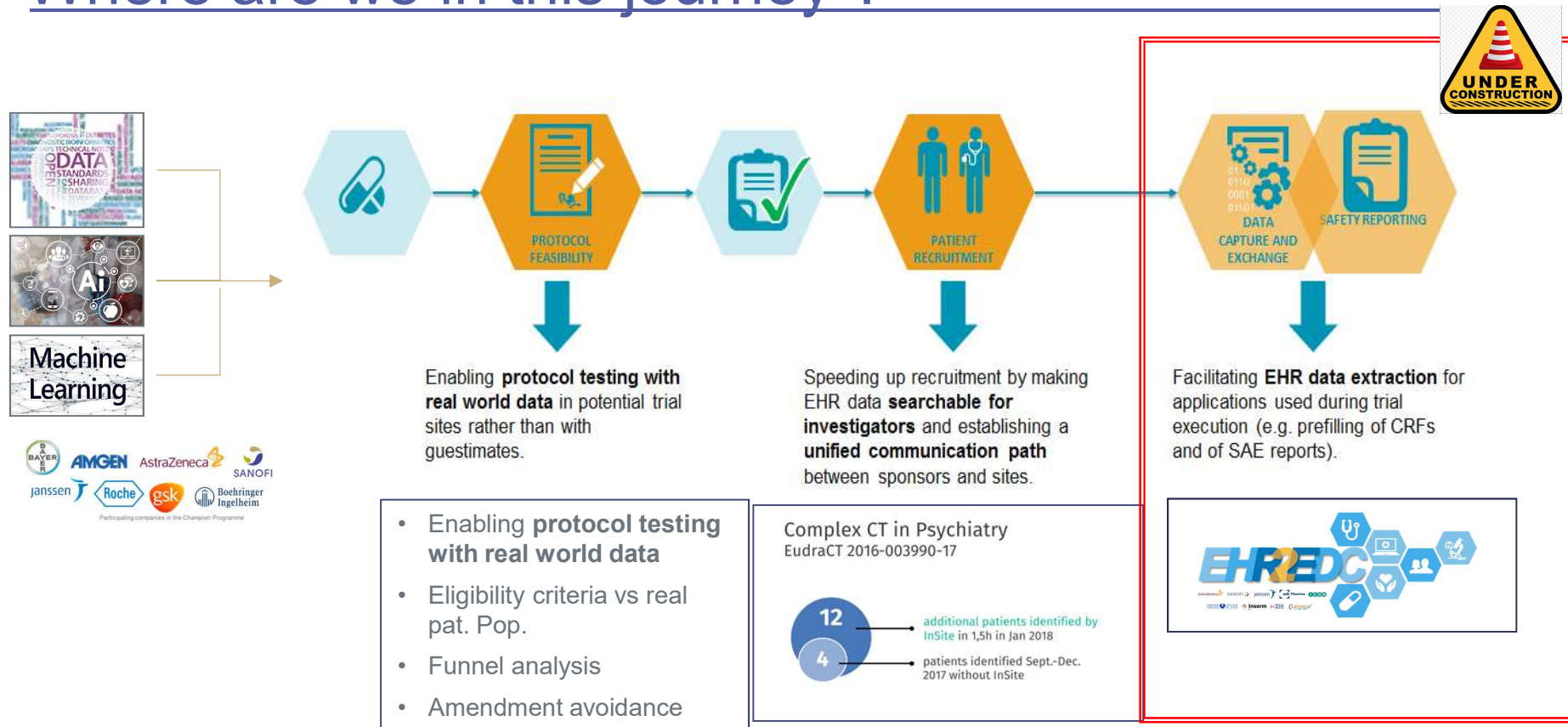


March '17





# Where are we in this journey ?



# Main Research Platforms



TriNetX's advanced analytics modules provide intelligence on which criteria have the most impact as well as the rate at which new patients present



*Getting Real About Real World Data*



InSite is building a community dedicated to accelerating clinical research through Real World Data in a secure & trustworthy way

- **Feasibility**
- **Recruitment**
- **EHRs to EDC**

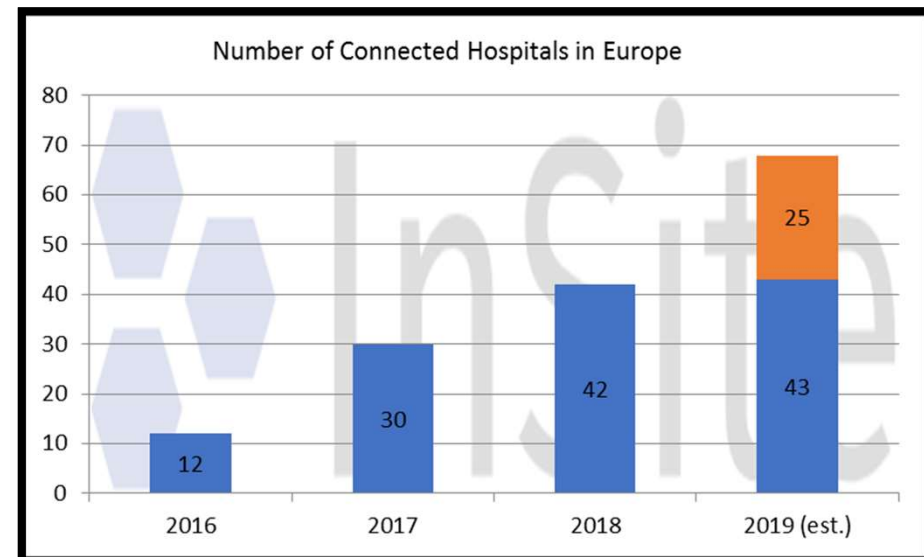


TriNetX, InSite Unite to Establish World's Largest Clinical Research Network

Acquisition of Belgium-based Custodix Promises to Bring New Pharmaceutical-Sponsored Clinical Trials to Healthcare Organizations Throughout Europe



## Connected Hospital Network – Europe



# Value for the Hospitals

---

**Patient Centred Clinical Intelligence:**  
Make **smarted decisions** through analytics and dashboards and by exploring your own patient population

**Academic Trials:** **Promote your own Clinical Studies** at a preferred rate. Get access to the central platform to find patients easier and faster.

**Assess and ensure hospital quality data.** **Better data means better data care.**

**Be active part** of a Clinical research network. Obtain an **early overview of upcoming sponsor** trials design and choose

**Be visible** to sponsors and **attract clinical trials**





Àngels García Arellano  
[angels.garcia@sanofi.com](mailto:angels.garcia@sanofi.com)  
[linkedin.com/in/angelsgarciaarellano](https://www.linkedin.com/in/angelsgarciaarellano)